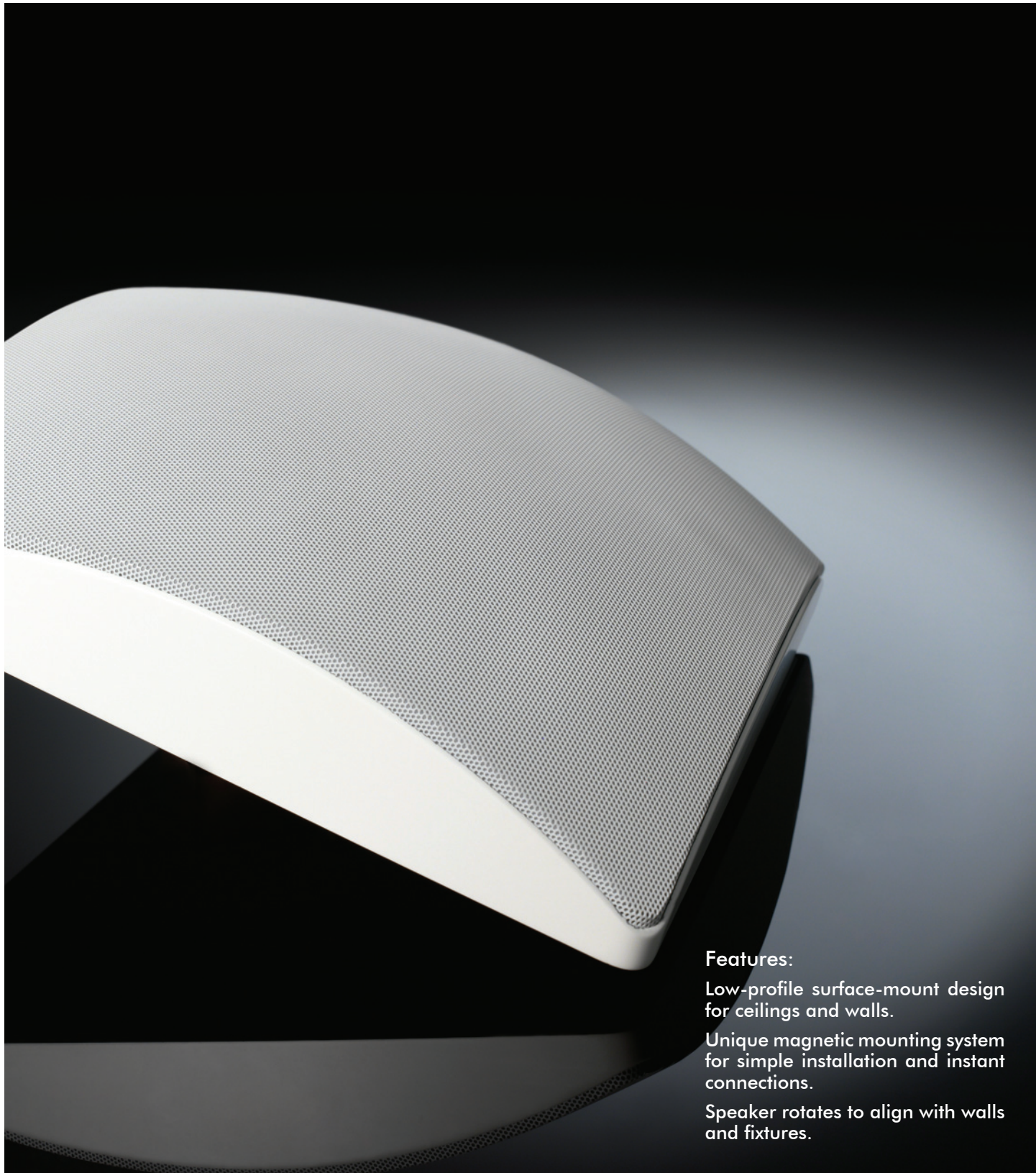


SONANCE

SURFACE-MOUNT SERIES



Features:

Low-profile surface-mount design for ceilings and walls.

Unique magnetic mounting system for simple installation and instant connections.

Speaker rotates to align with walls and fixtures.

SURFACE-MOUNT SERIES

SM55 AND SM55 SST



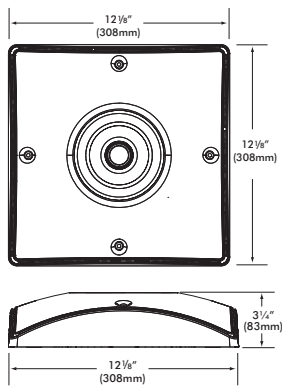
The new Sonance **SM55** and **SM55 SST** Surface Mount Speakers are the perfect solution for those who demand quality sound but cannot use in-ceiling or in-wall speakers. In the **SM55** and **SM55 SST**, Sonance engineers have created speakers that sound great, yet are decor-friendly, easy to install, and do not require a mounting hole. A one-step paint process saves time compared to traditional flanged speakers.

The low-profile surface-mount design is ideal for installations that cannot accommodate in-ceiling or in-wall speakers. Installation is extremely simple: Connect the mounting plate to the speaker wire and screw it to a junction box in the mounting location. The mounting plate rotates, allowing the **SM55** and **SM55 SST** to be aligned with lighting fixtures or other decor features after installation. For installations without a junction box, the speaker can be attached directly to the mounting surface without using the mounting plate.

Dimensions:

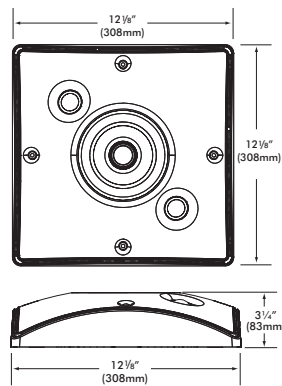
SM55

Surface-Mount Speaker

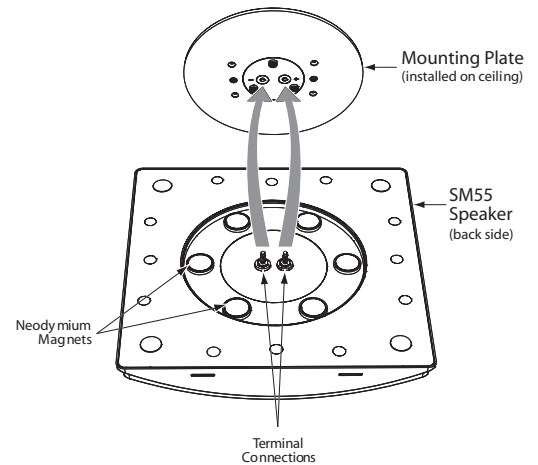


SM55 SST

Surface-Mount Speaker with Single Stereo Technology®



Installation Example:



Specifications:

SM55

Tweeter:	1" (25mm) silk dome, ferrofluid-cooled
Woofer:	5 1/4" (133mm) carbon fiber cone, with a rubber surround
Frequency Response:	65Hz – 20kHz ±3dB
Impedance:	8 ohms nominal; 6 ohms minimum
Power Handling:	5 watts minimum; 60 watts maximum
Sensitivity:	88dB SPL (2.83V/1 meter)
Grille Material:	Perforated aluminum
Dimensions (H x W x D):	12 1/8" x 12 1/8" x 3/4" (308mm x 308mm x 83mm)
Shipping Weight:	10 lbs (4.5kg) pair

SM55 SST

Tweeter:	Two 1" (25mm) silk domes, ferrofluid-cooled
Woofer:	5 1/4" (133mm) carbon fiber cone, with a rubber surround, dual voice coil
Frequency Response:	65Hz – 20kHz ±3dB
Impedance:	8 ohms nominal; 6 ohms minimum
Power Handling:	5 watts minimum; 60 watts maximum
Sensitivity:	88dB SPL (2.83V/1 meter)
Grille Material:	Perforated aluminum
Dimensions (H x W x D):	12 1/8" x 12 1/8" x 3/4" (308mm x 308mm x 83mm)
Shipping Weight:	5 lbs (2.3kg) each

Limited Lifetime Warranty:

For full warranty information, please see the instruction manual.

Sonance
212 Avenida Fabricante
San Clemente, CA 92672-7531 USA
800.582.7777
sonance.com