



# Experience

You can count on . . .

*Lowell's* professional Rack and Power products are coming *home*. From world recognized performance venues...to boardrooms...and now home theaters; Lowell's precision craftsmanship and 60 years manufacturing expertise bring new opportunities to CEDIA's premier consultants and integrators.

## *Benefits*

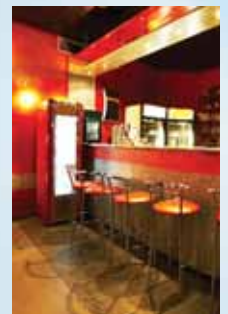
- ∞ Built-in wall racks with pull & turn accessibility.
- ∞ Open-frame, solid-side and wall-mount cabinets.
- ∞ Reversible punched/tapped rails that meet AV and IT hardware preferences.
- ∞ Useful accessories including shelves with custom fascia to tailor-dress component electronics.
- ∞ AC power distribution including panels, strips & loadcenters with surge protection, ground filtering, sequencing and remote triggering.

See Lowell's complete selection of products at [www.lowellmfg.com](http://www.lowellmfg.com)



### **Kodak Theater**

Courtesy of "Academy of Motion Picture Arts and Sciences".  
One of the many 'world class' performance venues, stadiums, and Houses of Worship where Lowell racks perform behind the scenes.



*Rack it . . .*

*Power it . . .*

*Protect it . . .*



# Wall Racks

## Pull & Turn: LPT Series

Hiding and securing your components inside a wall or custom cabinetry has never been easier. Precision slides allow smooth pull out access to equipment. The rotating turntable features a pushbutton lock and release providing 60° and 90° access to rear connections.

For installation convenience, the rack disengages from the turntable base allowing components to be wired offsite and then easily docked and re-secured to the base. Front security panel avoids unauthorized access. 19.13" (48.6cm) overall width.



Fits in walls or millwork that is at least 20"W and 20"D or 24" D



19"D Model (48.3cm)	23"D Model (58.4cm)	Mounting Height rack unit, inches (cm)	Overall Height inches (cm)	Slide Qty / Load Rating lbs (kg)
<b>LPT4-1917</b>	<b>LPT4-2317</b>	10RU, 17.5 (44.5)	20.08 (51)	4 / 300 (136)
<b>LPT4-1921</b>	<b>LPT4-2321</b>	12RU, 21 (53.3)	23.58 (59.9)	4 / 300 (136)
<b>LPT4-1928</b>	<b>LPT4-2328</b>	16RU, 28 (71)	30.58 (77.7)	4 / 300 (136)
<b>LPT4-1936</b>	<b>LPT4-2336</b>	21RU, 36.75 (93.3)	39.33 (99.9)	4 / 300 (136)
<b>LPT2-1917</b>		10RU, 17.5 (44.5)	20.08 (51)	2 / 150 (68)
<b>LPT2-1921</b>		12RU, 21 (53.3)	23.58 (59.9)	2 / 150 (68)
<b>LPT2-1928</b>		16RU, 28 (71)	30.58 (77.7)	2 / 150 (68)
<b>LPT2-1936</b>		21RU, 36.75 (93.3)	39.33 (99.9)	2 / 150 (68)



## Swing-out: L250 and L253 Series

Sectional cabinets with swing-out access to rear connections are the perfect choice for securing equipment in closet areas when floor space is limited. Includes solid door and Lowell's reversible tapped/punched rails. 23" (58.4cm) overall width.



Ask about **L83 Series** Tilt-out cabinets with controlled-action hydro-pneumatic dampers.

14"D Model* (35.6cm)	18"D Model* (45.7cm)	Mounting Height rack unit, inches (cm)	Overall Height inches (cm)	Load Rating lbs (kg)
<b>L250-17</b>	<b>L253-17</b>	10RU, 17.5 (44.5)	23.625 (60)	150 (68)
<b>L250-21</b>	<b>L253-21</b>	12RU, 21 (53.3)	27.125 (68.9)	150 (68)
<b>L250-28</b>	<b>L253-28</b>	16RU, 28 (71)	34.125 (86.7)	200 (90.7)
<b>L250-36</b>	<b>L253-36</b>	21RU, 36.75 (93.3)	42.875 (108.9)	250 (113.4)
<b>L250-42</b>	<b>L253-42</b>	24RU, 42 (106.7)	48.125 (122.2)	300 (136)

\*Note: Model includes a 4"D (10.2cm) rear box. Shorter and taller models are also available.



# Freestanding



Floor cabinets and racks are perfect for large home theater, boardroom, and whole-house electronic distribution systems where centralized control and security is desired.



## Welded Cabinets Include:

- Flush rear door with vents and lock.
- Adjustable/reversible mounting rails (see below) with printed RU increments.
- Solid top panels fit flush in top rails.
- Removable knockout panels above and below rear door for easy wiring.
- PilotPoint™ panel hardware (10-32).
- Durable and fingerprint resistant powder paint finish in wrinkle black.

22"D Model*	27"D Model*	Mounting Height rack unit, inches (cm)	Overall Height inches (cm)	Overall Width inches (cm)
<b>L265-77</b>	<b>L267-77</b>	44RU, 77.125 (195.9)	83.125 (211.1)	23.062 (58.6)
<b>L265-70</b>	<b>L267-70</b>	40RU, 70.125 (178.1)	76.125 (193.4)	23.062 (58.6)
<b>L265-61</b>	<b>L267-61</b>	35RU, 61.375 (155.9)	67.375 (171.1)	23.062 (58.6)
<b>L265-42</b>	<b>L267-42</b>	24RU, 42.125 (107)	48.125 (122.2)	23.062 (58.6)
<b>L265-36</b>	<b>L267-36</b>	21RU, 36.875 (93.7)	42.875 (108.9)	23.062 (58.6)

Accessorize with front doors, bases & fans!

\*For deeper installations 32"D L268 Series is also available.

## Doors

Shown with optional solid, perforated or plexiglas front door. Ask for **L2150 Series**.

## Welded Racks Include:

- Flush rear door with vents and lock.
- Adjustable/reversible mounting rails (see below) with printed RU increments.
- Solid top panels fit flush in top rails.
- Removable knockout panels above and below rear door for easy wiring.
- PilotPoint™ panel hardware (10-32).
- Durable and fingerprint resistant powder paint finish in wrinkle black.

27"D Model*	32"D Model*	Mounting Height rack unit, inches (cm)	Overall Height inches (cm)	Overall Width inches (cm)
<b>L277-77</b>	<b>L278-77</b>	44RU, 77.125 (195.9)	83.125 (211.1)	23.062 (58.6)
<b>L277-70</b>	<b>L278-70</b>	40RU, 70.125 (178.1)	76.125 (193.4)	23.062 (58.6)
<b>L277-61</b>	<b>L278-61</b>	35RU, 61.375 (155.9)	67.375 (171.1)	23.062 (58.6)
<b>L277-42</b>		24RU, 42.125 (107)	48.125 (122.2)	23.062 (58.6)

Accessorize with front doors, bases, sides & fans!

\*For shallower or deeper installations; see 22"D L275 Series or 36"D L279 Series.



## Sides

Optional lift off convenience and lock-down security.



## Bases

Optional bases provide mobility or a bottom mounting surface.

- MB Series** Mobile platform
- PB Series** Stationary platform
- PBS Series** Shallow platform

## Reversible Rails

Models include Lowell's unique 2-sided rails with 10-32 threaded holes on one side and square punched holes on the other. Simply reverse the rails



for installations that require cage nuts and a mixture of 10-32, 12-24 or 6mm hardware. Printed RU increments make installation easy.

# Credenza



Versatile, low-height racks allow for built-in mounting of electronics into cabinetry or under counters and desks. They are the ideal solution for mounting smaller or specialized system components.



X-1720 shown with RMK Series shelf with custom fascia and blank panels.



X-2820



X2820 shown with optional expansion kit and optional mid rails.

## Build-in-place system: X Series

- Versatile frame system allows custom-height racks to easily be built.
- Ships unassembled for UPS delivery.
- 14-gauge US steel with self-clinching studs for fast assembly.
- Front and rear rackrail has threaded 10-32 mounting holes.

20.125"D Model (51.1cm)	Mounting Height* rack unit, inches (cm)	Overall Height inches (cm)	Overall Width inches (cm)	Opt'l Mid Rail	Opt'l Height Expansion Kit
<b>X-1720</b>	10RU, 17.5 (44.4)	17.687 (44.9)	19.25 (48.6)	XRR-17	XK 1720 (+17.5") or XK2820 (+28")
<b>X-2820</b>	16RU, 28 (71.1)	28.187 (71.6)	19.25 (48.6)	XRR-17	XK 1720 (+17.5") or XK2820 (+28")

\*This is maximum mounting height with front and rear 1RU vent panels replaced by equipment.

## Welded Assembly: LCR-21

- Rugged welded frame ships ready to install.
- 14-gauge US steel top and bottom.
- 11 gauge front and rear rackrail has threaded 10-32 mounting holes.

16"D Model (40.6cm)	Mounting Height rack unit, inches (cm)	Overall Height inches (cm)	Overall Width inches (cm)
<b>LCR-21</b>	12RU, 21.125 (53.7)	23 (58.4)	19.25 (48.9)



## Rolling under desk cabinet: L45-21



- Fits under standard height counters & work surfaces.
- Sloped front with 12RU provides comfortable viewing of equipment from a seated position.
- Locking front door opens from the top and slides into base for unobstructed access to equipment.
- Short, flush rear door with lock has 1RU wire access.
- Twin-wheel caster provide smooth operation on carpets and floors.
- Covered device cut-outs above front door allow optional use of low voltage decora-style devices.

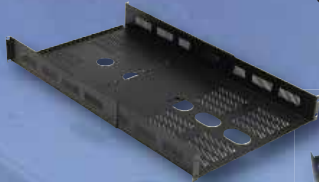
25.5"D Model (64.8cm)	Mounting Height rack unit, inches (cm)	Overall Height* inches (cm)	Overall Width inches (cm)	Opt'l Top (Laminate) graphite grey
<b>L45-21</b>	12RU, 21.125 (53.7)	26.875 (68.3)	22.187 (56.4)	L45-GT

\*Height includes casters

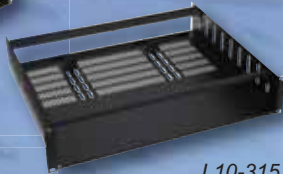
# Accessories

## Shelves with custom fascia: RMK Series

- Tailor-dress non-rackmount equipment with shelves and custom fascia for a professional and secure installation.
- Each RMK shelf kit includes rear bracket stops and a fascia plate that will be custom-made to your specifications (see template at [www.lowellmfg.com](http://www.lowellmfg.com)).
- Vented shelves ship flat and are hinged - no assembly!
- Choose 2RU to 5RU sizes in painted or black anodized finish.



L15-3X



L10-315



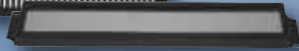
L28-193



L22-197



L6-193



L9-193P



LD8-RMP



LD3-RMP



LCRS4



LCRS



LCMP



RSP-500

CLB-32

Professionally mount non-rackmount equipment using RMK Series rackmount kits.



RMK2-14

Hinged sides require no assembly.

Custom fascia attaches after equipment is mounted.



## Series\* Description

\* See website ([www.lowellmfg.com](http://www.lowellmfg.com)) and pricing for individual model numbers in each series.

### Shelves

Series	Description	Racking Height Selection
RMK	Shelf with custom face plate-Rack Kit (black anodized avail-see above)	2RU-5RU
L15	Shelf with solid base 10"D (25.4cm) or 14"D (35.6cm)	2RU-3RU
L15-3X	Shelf with vents and expandable depth 20" - 32"D (50.8 - 81.3cm)	2RU
L10	Shelf with vents, hold-down brackets & rear stops 15"D (38.1cm)	2RU-4RU

### Drawers & Media Holders

L18	Drawer 16.5"D (41.9cm) with optional lock (black anodized avail)	2RU-6RU
L28	Drawer 14.5"D (36.8cm) with optional lock	2RU-4RU
L22	Media holder for CD's	4RU

### Panels

L2	Panel blank aluminum (16ga) formed edge (black anodized avail)	1RU-6RU
L2V	Panel vneted aluminum (16ga) formed edge (black anodized avail)	1RU-2RU
L3	Panel blank steel (16ga) with formed edge	1RU-12RU
L6	Panel vented steel (16ga) with formed edge	1RU-2RU
L9	Panel security cover with plexiglas or vents	1RU-2RU
LD3-RMP	Panel with cutouts for 3 decora LV devices	1RU
LD8-RMP	Panel with cutouts for 8 decora LV devices	3RU
LD9-RMP	Panel with cutouts for 9 decora LV devices	3RU

### Wire Management & Hardware

LCRS	Cable lacing rod 1/4" (.64cm) Dia. straight	N/A
LCRS4	Cable lacing rod 1/4" (.64cm) Dia. with 4" (10.2cm) offset	N/A
LCMP	Cable lacing panel slotted .625"H (1.6cm)	N/A
CLB	Cable lacing bar 2.625"W x 32"L or 77"L (6.7 x 81.3 x 195.6cm)	N/A
RSP-500	Jar of 500 PilotPoint screws/washers 10-32 phillips finish head	